



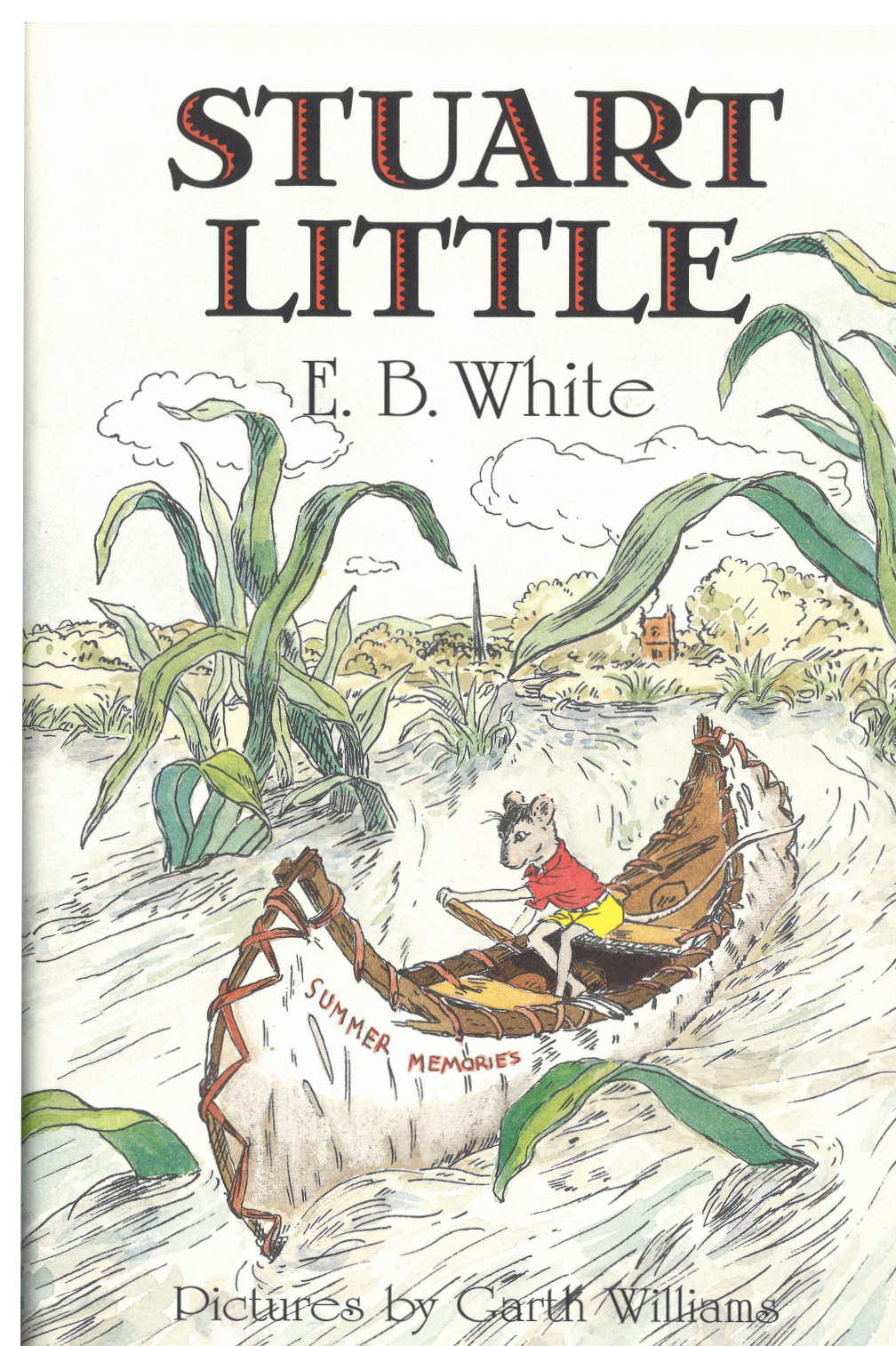
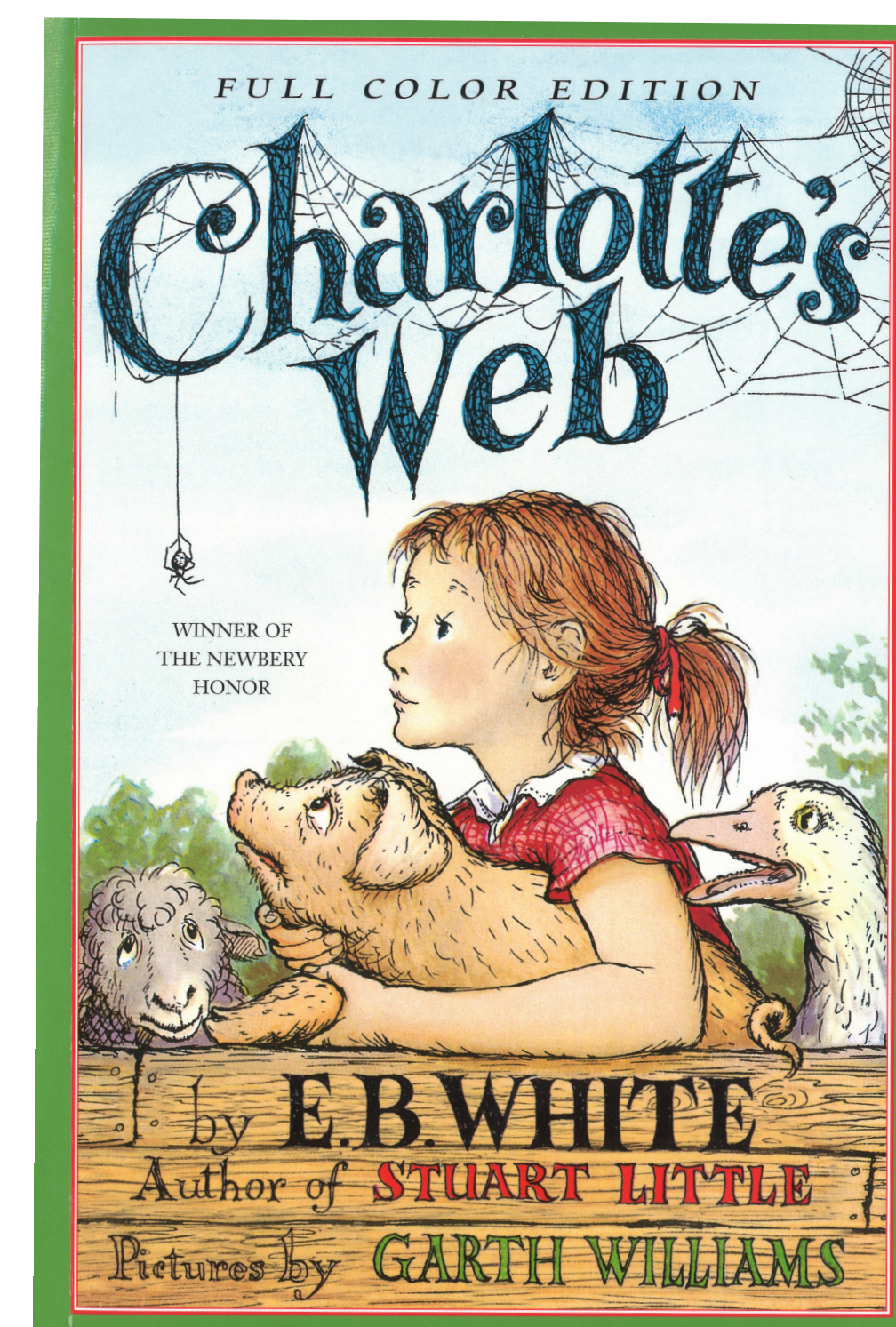
# FUTURE HOME OF THE

# Garth Williams Sculpture Garden

Southeast lawn of the Abilene Civic Center

Join us as we begin a new chapter in the official Storybook Capital of Texas!

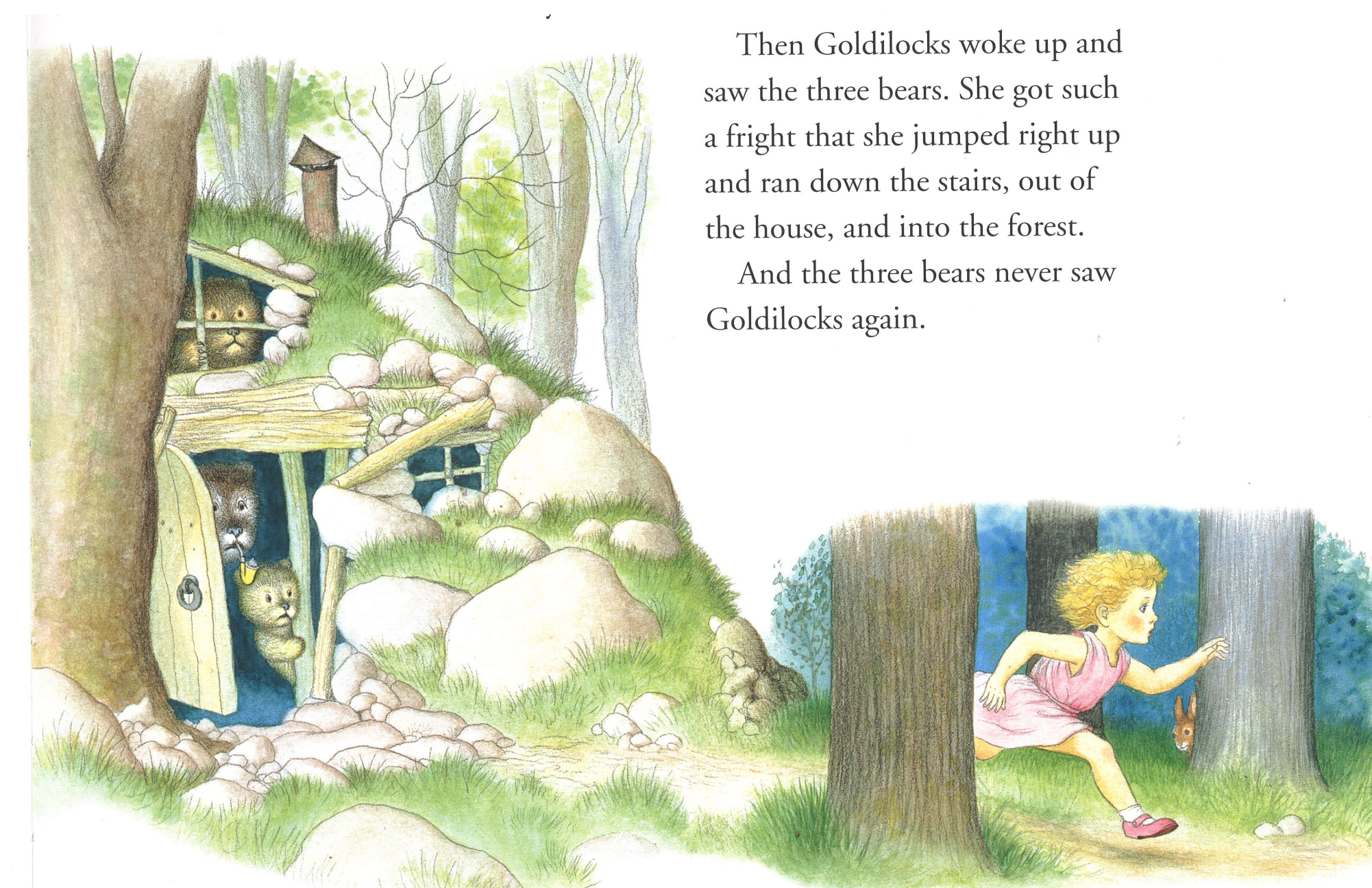
The Abilene Cultural Affairs Council is excited to announce plans to honor an illustrator who has brought to life some of the most beloved characters of all time. The Garth Williams Sculpture Garden will feature five sets of bronze sculptures representing characters from the best-selling children's classics "Charlotte's Web," "Stuart Little" and the Little Golden Book "Three Bedtime Stories." The garden will have new landscaping, stone benches and other special features. Contact us for sponsorship opportunities!



"The Three Little Kittens"

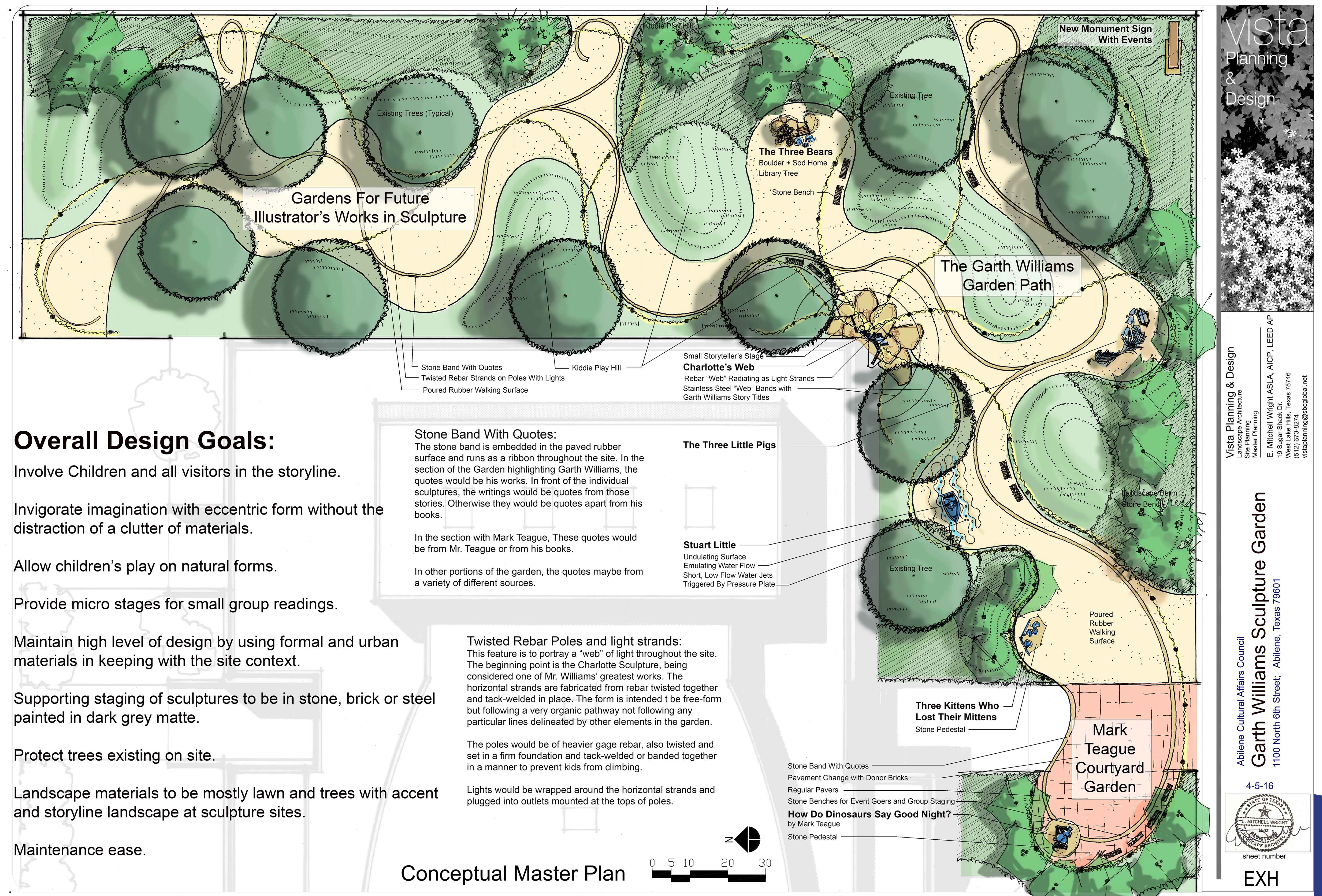


"The Three Little Pigs"



"The Three Bears"

Then Goldilocks woke up and saw the three bears. She got such a fright that she jumped right up and ran down the stairs, out of the house, and into the forest. And the three bears never saw Goldilocks again.



### Overall Design Goals:

- Involve Children and all visitors in the storyline.
- Invigorate imagination with eccentric form without the distraction of a clutter of materials.
- Allow children's play on natural forms.
- Provide micro stages for small group readings.
- Maintain high level of design by using formal and urban materials in keeping with the site context.
- Supporting staging of sculptures to be in stone, brick or steel painted in dark grey matte.
- Protect trees existing on site.
- Landscape materials to be mostly lawn and trees with accent and storyline landscape at sculpture sites.
- Maintenance ease.

Conceptual Master Plan



1101N. 1st St. | 325-677-1161 | info@abilenecac.org

Help Wilbur and his friends find a home!



Make a \$1 or more donation to the Garth Williams Sculpture Garden and receive this special edition button

vista Planning & Design  
 Abilene Cultural Affairs Council  
 Garth Williams Sculpture Garden  
 1101 North 1st Street, Abilene, Texas 79601  
 4-5-16  
 sheet number EXH