



Schoeneman Bros. Co.
600 N. CLIFF AVE
HARRISBURG, SD 57032

PHONE: (605) 213-1100

SOLD TO: ESTIMATE-STANDARD
SHIP TO: SS ROTARY PIRATE SHIP

CUST NO: 126485
TERMS: Due the 10th

DATE: 5/6/21
CLERK: NFT
SALESPERSON: NT NORRIS TIENSVD
TAX: 100 SIOUX FALLS
TIME: 4:09
TERMINAL: 567

REFERENCE: LEIF ERICKSON DAYCAMP
JOB NO: 000

EXPIRATION DATE: 5/12/21

QUOTATION: 647956

ESTIMATE: 647956/1

LINE	QTY	UM	SKU	DESCRIPTION	UNITS	PRICE/	PER	EXTENSION
1								
2				**NO CONCRETE FIGURED**				
3	13	PC	4410T	4X4X10 TREATED SYP	13	26.955	/PC	350.42
4	3	PC	448T	4X4X8 TREATED SYP	3	19.98	/PC	59.94
5								
6				LEFT DECK FRAMEWORK:				
7				**MAST POLE BY OTHERS**				
8	12	PC	2812T	2X8X12 TREATED SYP	12	25.965	/PC	311.58
9	9	PC	2810T	2X8X10 TREATED SYP	9	21.96	/PC	197.64
10	1	PC	288T	2X8X8 TREATED SYP	1	16.74	/PC	16.74
11	20	EA	JH28	SINGLE 2 X 8 JOIST HANGER	20	1.161	/EA	23.22
12								
13				MIDDLE DECK FRAMEWORK:				
14	2	PC	2812T	2X8X12 TREATED SYP	2	25.965	/PC	51.93
15	8	PC	2810T	2X8X10 TREATED SYP	8	21.96	/PC	175.68
16	16	EA	JH28	SINGLE 2 X 8 JOIST HANGER	16	1.161	/EA	18.58
17								
18				RIGHT DECK FRAMEWORK:				
19	1	PC	288T	2X8X8 TREATED SYP	1	16.74	/PC	16.74
20	2	PC	21212T	2X12X12 TREATED SYP	2	62.955	/PC	125.91
21	7	PC	2810T	2X8X10 TREATED SYP	7	21.96	/PC	153.72
22	4	EA	JH28	SINGLE 2 X 8 JOIST HANGER	4	1.161	/EA	4.64
23								
24				GANGPLANK:				
25	3	PC	21016T	2X10X16 TREATED SYP	3	44.955	/PC	134.87
26	3	PC	2416T	2X4X16 TREATED SYP	3	20.97	/PC	62.91
27								
28				STEPS:				
29	3	PC	21210T	2X12X10 TREATED SYP JACKS	3	51.48	/PC	154.44
30	3	PC	2410T	2X4X10 TREATED SYP SISTERS	3	13.455	/PC	40.37
31	1	PC	2612T	2X6X12 TREATED SYP HANGER	1	19.98	/PC	19.98
32	2	PC	2410T	2X4X10 TREATED SYP HANGERS	2	13.455	/PC	26.91
33	3	PC	2612T	2X6X12 TREATED SYP TREADS	3	19.98	/PC	59.94

Continued...

This is a estimate only, based on the plans and specifications given to us. We agree to furnish only the quantities and materials as listed on this estimate. It is the responsibility of the buyer to determine if the quantities and materials estimated are sufficient to do the work. Changes in plans and specifications will affect the cost of this project. Errors and omissions are subject to correction. These prices are good for 30 days. After 30 days, this estimate may have to be repriced, based on current market conditions.



Schoeneman Bros. Co.
600 N. CLIFF AVE
HARRISBURG, SD 57032

PHONE: (605) 213-1100

SOLD TO: ESTIMATE-STANDARD
SHIP TO: SS ROTARY PIRATE SHIP

CUST NO: 126485
TERMS: Due the 10th

DATE: 5/6/21
CLERK: NFT
SALESPERSON: NT NORRIS TIENSVOLD
TAX: 100 SIOUX FALLS
TIME: 4:09
TERMINAL: 567

REFERENCE: LEIF ERICKSON DAYCAMP
JOB NO: 000

EXPIRATION DATE: 5/12/21

QUOTATION: 647956

ESTIMATE: 647956/1

LINE	QTY	UM	SKU	DESCRIPTION	UNITS	PRICE/	PER	EXTENSION
34	1	PC	268T	2X6X8 TREATED SYP TREADS	1	11.97	/PC	11.97
35								
36				WALL FILL BELOW LEFT & RIGHT				
37				DECKS:				
38	2	PC	248T	2X4X8 TREATED SYP	2	10.98	/PC	21.96
39	2	PC	2410T	2X4X10 TREATED SYP	2	13.455	/PC	26.91
40	2	PC	4812T	4X8 1/2" CCX TREATED PLYWOOD	2	69.975	/PC	139.95
41								
42				SHIP'S LADDER:				
43	3	PC	2128T	2X12X8 TREATED SYP	3	39.465	/PC	118.40
44	1	PC	2616T	2X6X16 TREATED SYP	1	25.965	/PC	25.97
45	1	PC	248T	2X4X8 TREATED SYP	1	10.98	/PC	10.98
46								
47				DECKING:				
48	20	PC	54610T	5/4X6X10 TREATED SYP	20	11.97	/PC	239.40
49	42	PC	54612T	5/4X6X12 TREATED SYP	42	14.355	/PC	602.91
50								
51				WALL FILL @ BRIG:				
52	6	PC	2410T	2X4X10 TREATED SYP	6	13.455	/PC	80.73
53	6	PC	2412T	2X4X12 TREATED SYP	6	16.47	/PC	98.82
54	7	PC	4812T	4X8 1/2" CCX TREATED PLYWOOD	7	69.975	/PC	489.83
55								
56				RAIL FIGURED AS 36" HIGH, WITH 3				
57				HORIZONTAL 2x4 RAILS & 1 2x6 CP.				
58				THIS WORKS OUT TO ABOUT 8"				
59				BETWEEN THE HORIZONTAL RAILS:				
60								
61	2	PC	248T	2X4X8 TREATED SYP PLANK BOTTOM	2	10.98	/PC	21.96
62	32	PC	248T	2X4X8 TREATED SYP VERTICLES	32	10.98	/PC	351.36
63				RAIL HORIZONTALS:				
64	16	PC	248T	2X4X8 TREATED SYP	16	10.98	/PC	175.68
65	6	PC	2410T	2X4X10 TREATED SYP	6	13.455	/PC	80.73
66	16	PC	2412T	2X4X12 TREATED SYP	16	16.47	/PC	263.52

Continued...

This is a estimate only, based on the plans and specifications given to us. We agree to furnish only the quantities and materials as listed on this estimate. It is the responsibility of the buyer to determine if the quantities and materials estimated are sufficient to do the work. Changes in plans and specifications will affect the cost of this project. Errors and omissions are subject to correction. These prices are good for 30 days. After 30 days, this estimate may have to be repriced, based on current market conditions.



Schoeneman Bros. Co.
600 N. CLIFF AVE
HARRISBURG, SD 57032

PHONE: (605) 213-1100

SOLD TO: ESTIMATE-STANDARD
SHIP TO: SS ROTARY PIRATE SHIP

CUST NO: 126485
TERMS: Due the 10th

DATE: 5/6/21
CLERK: NFT
SALESPERSON: NT NORRIS TIENSVD
TAX: 100 SIOUX FALLS
TIME: 4:09
TERMINAL: 567

REFERENCE: LEIF ERICKSON DAYCAMP
JOB NO: 000

QUOTATION: 647956

EXPIRATION DATE: 5/12/21

ESTIMATE: 647956/1

LINE	QTY	UM	SKU	DESCRIPTION	UNITS	PRICE/	PER	EXTENSION
67	4	PC	2414T	2X4X14 TREATED SYP	4	19.485	/PC	77.94
68	6	PC	2416T	2X4X16 TREATED SYP	6	20.97	/PC	125.82
69	5	PC	4812T	4X8 1/2" CCX TREATED PLYWOOD	5	69.975	/PC	349.88
70	1	CT	318GRKL	5/16x3-1/8 GRK RSS TORX LAG SCRW	1	0.39	/CT	195.00
71				1/CTN-500- \$.39 per CT				
72	1	CT	518GRKL	5/16x5-1/8 GRK RSS TORX LAG SCRW	1	186.30	/CT	186.30
73				1/CTN-300- \$186.30 per CT				
74	3	EA	H48610	PP EXT STAR DECK 9X2-1/2 5 LB	3	34.191	/EA	102.57
75	4	EA	H48611	PP EXT STAR DECK 9X3 5 LB	4	34.191	/EA	136.76
76	2	PC	21016T	2X10X16 TREATED SYP SPAR	2	44.955	/PC	89.91
77	2	PC	2416T	2X4X16 TREATED SYP SPAR	2	20.97	/PC	41.94
78	2	PC	21016T	2X10X16 TREATED SYP PLANK	2	44.955	/PC	89.91
79	2	PC	2416T	2X4X16 TREATED SYP PLANK	2	20.97	/PC	41.94
80	1	EA	BID	NAILS/HDWR/MISC ALLOWANCE	1	500.00	/EA	500.00
81								
82				Due to turbulent conditions in				
83				the lumber market, we are				
84				instituting the following				
85				guidelines to ensure that we can				
86				supply material to our				
87				customers. This year pricing and				
88				availability are going to be				
89				tricky issues in our industry.				
90				We feel that by using these				
91				guidelines, it will allow us to				
92				better track our lumber needs				
93				and keep current with				
94				availability and our costs.				
95								
96				The prices on our estimates				
97				are good for acceptance within 7				
98				days, for shipment to the				
99				jobsite within 120 days.				

Continued...

This is a estimate only, based on the plans and specifications given to us. We agree to furnish only the quantities and materials as listed on this estimate. It is the responsibility of the buyer to determine if the quantities and materials estimated are sufficient to do the work. Changes in plans and specifications will affect the cost of this project. Errors and omissions are subject to correction. These prices are good for 30 days. After 30 days, this estimate may have to be repriced, based on current market conditions.



Schoeneman Bros. Co.
 600 N. CLIFF AVE
 HARRISBURG, SD 57032

PHONE: (605) 213-1100

SOLD TO: ESTIMATE-STANDARD
 SHIP TO: SS ROTARY PIRATE SHIP

CUST NO: 126485
 TERMS: Due the 10th

DATE: 5/6/21
 CLERK: NFT
 SALESPERSON: NT NORRIS TIENSVOLD
 TAX: 100 SIOUX FALLS
 TIME: 4:09
 TERMINAL: 567

REFERENCE: LEIF ERICKSON DAYCAMP
 JOB NO: 000

EXPIRATION DATE: 5/12/21

QUOTATION: 647956

ESTIMATE: 647956/1

LINE	QTY	UM	SKU	DESCRIPTION	UNITS	PRICE/	PER	EXTENSION
100				Anything outside those				
101				parameters will need to be				
102				repriced.				
103								
104				In order that we make sure				
105				we can have materials for you				
106				when you need them, we need a				
107				commitment in writing; an e-mail				
108				would work fine.				

TAXABLE 6705.21
 NON-TAXABLE 0.00
 SUBTOTAL 6705.21

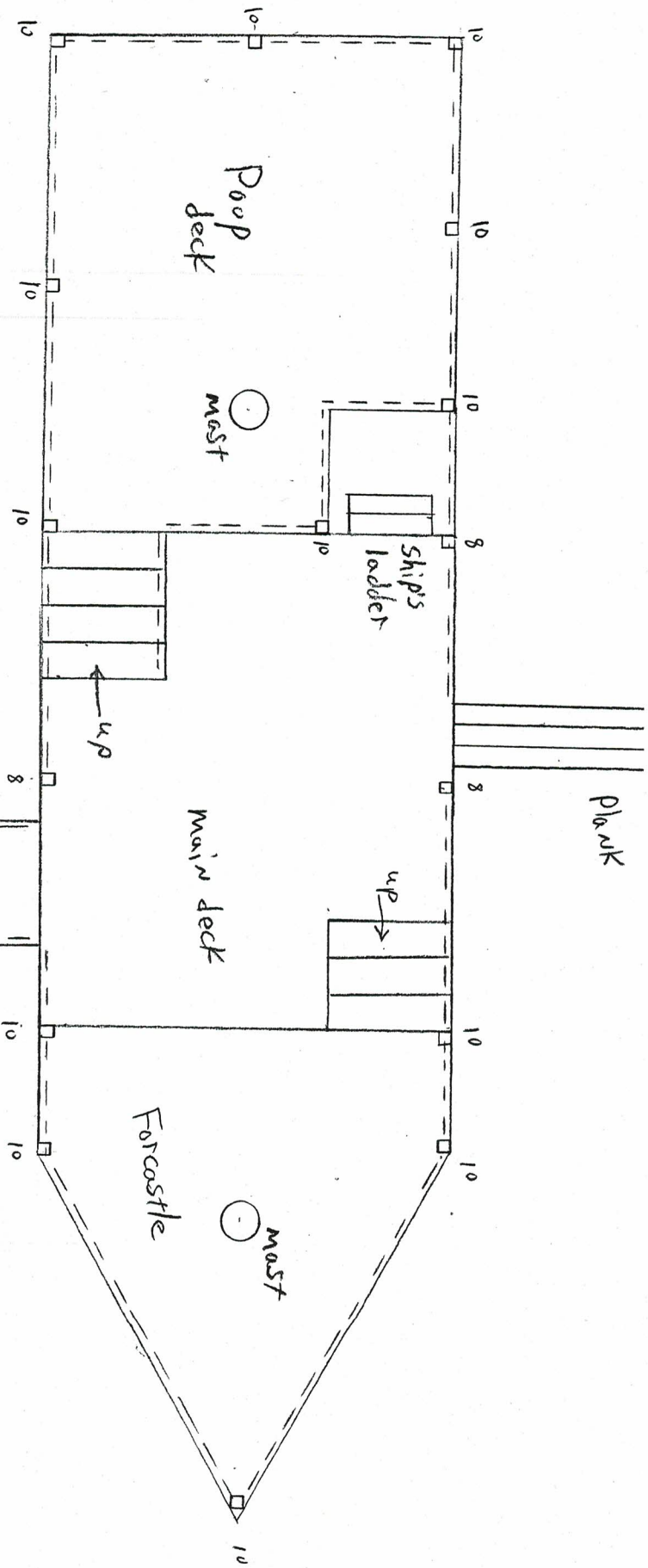
TAX AMOUNT 435.84

TOTAL 7141.05

TOT WT: 7490.71

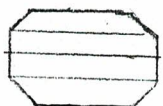
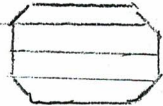
X _____
 Accepted By

This is a estimate only, based on the plans and specifications given to us. We agree to furnish only the quantities and materials as listed on this estimate. It is the responsibility of the buyer to determine if the quantities and materials estimated are sufficient to do the work. Changes in plans and specifications will affect the cost of this project. Errors and omissions are subject to correction. These prices are good for 30 days. After 30 days, this estimate may have to be repriced, based on current market conditions.



S.S. Rotary Private Ship

S.S. Rotary



2

