

Dignity Liberia

The House of Hope and Dignity

dignityliberia.org

Host Club: Monrovia Rotary Club

Int'l Partner: Loveland Rotary Club



EVERY
ROTARIAN
EVERY
YEAR

Project Background/Description

Our focus is female reproductive health specifically related to women with obstetric fistula (a trauma of birth canal injury resulting in urine and/or stool incontinence) in Liberia, West Africa. This will encompass equipping first a Maternity Waiting Home so that the women will be close to hospital care if there are delivery complications. An hour or so away instead of days to a hospital. In case of emergency, we would have an ambulance.



This requires bedding, mosquito nets, cooking supplies and hygiene supplies after the building is complete



Community Assessment

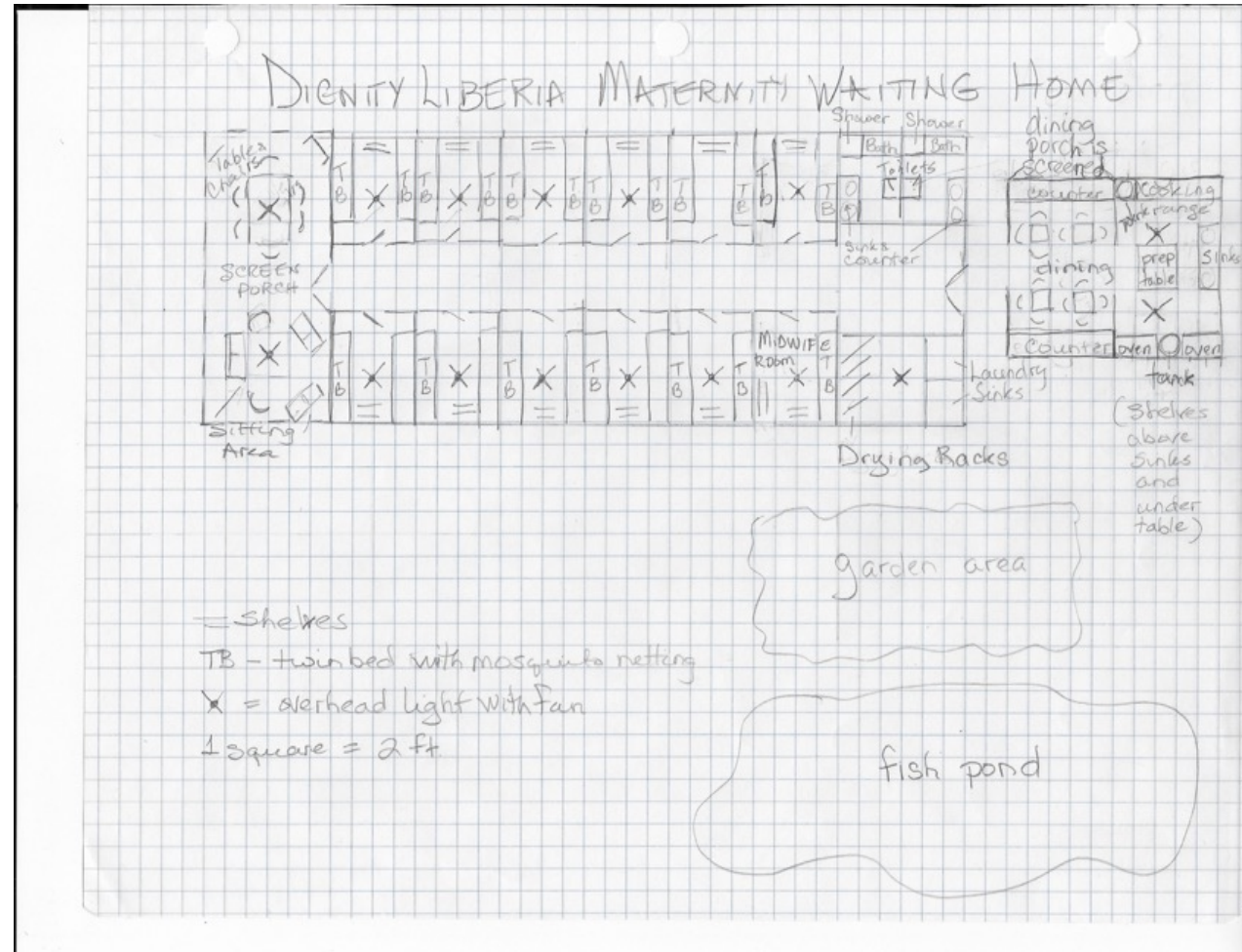
The community has been very welcoming. For specific interests, this will include work at the Maternity Waiting Home and on the site for building, and general upkeep.

As the intent is helping to provide safe deliveries, this will benefit the women of the village and their prenatal care.



Design Details

Just a preliminary sketch, this is an idea for the Maternity Waiting Home. We have an architect currently working on more detailed plans.



Plans for Sustainability

Our board is dedicated to this vision. We are committed to taking teams to further inspire others, either in serving, donating or possibly joining our board. We are actively pursuing other funding such as individual donors, Lakeland Community Church, and grants. We have plans for presenting at a virtual worldwide conference, FIGO out of Australia this year.





G-2592

HHD dedicated to John Stewart

Administration



Description

Financing

Documents

Photos

History Logs

Proposed Financing

Existing Contributions Towards This Project

	Date	Cash	DDF	Total
Loveland (5440)	30-Sep-20	\$4,000	\$10,000	\$14,000
Loveland (5440)	7-Aug-21	\$1,000	\$0	\$1,000
Loveland (5440)	19-Nov-21	\$1,000	\$0	\$1,000

Remaining Amount to Raise

<i>Additional Club Contribution (Needed) - Add a contribution</i>		\$26,000	-	\$26,000
Amount Requested from The Rotary Foundation		-	\$8,000	\$8,000

Total				\$50,000
--------------	--	--	--	----------

DDF contributions in grey are pending approval of the corresponding district committee.

Note: as of July 1, 2015 there is a **5% additional support fee** for cash contributions. This fee does not appear in the financials above because it does not apply if the funds are sent directly to the project account (without going through TRF, and therefore without Paul Harris credit). Clubs sending their cash contribution to TRF must be aware they will have to send an additional 5%.

Questions?

More questions?

**Please Contact: Becky Huner
Rotary Club of Loveland
mtnbecca59@gmail.com**