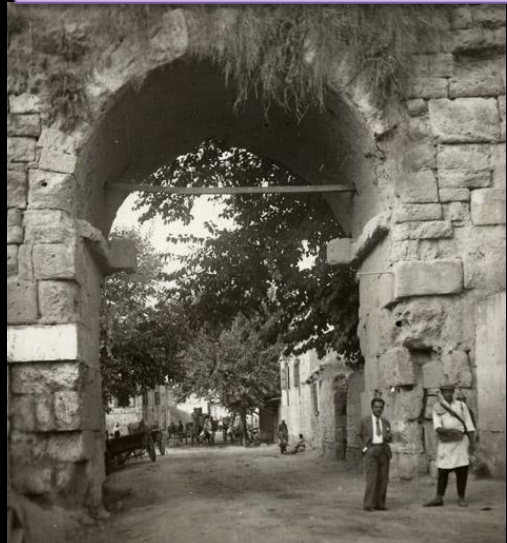


In 19 th century Biblical tours attracted many American missionaries to Tarsus who built an American High School here.



St.PAUL'S GATE



ANCIENT WELL AT ST. PAUL'S HOUSE

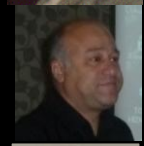


St.PAUL'S CHURCH IN TARSUS,ADANA

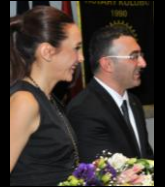


**AMERICAN MISSIONARY SCHOOL BUILT IN 1888 TILL TODAY IN St.PAULS HOMETOWN TARSUS**

**Lots of club members are Tarsus American College Alumniees**



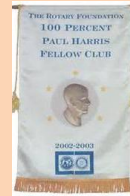
**CLUBS FUNDRAISING CONCERTS**



# COMMUNITY



## ADANA CUKUROVA RC , D2430 COMMUNITY PROJECTS



THETIS – CLEAN HANDS,  
SAFE DRINKING WATER,  
HYGIENE TRAINING OF  
TRAINEES



TRAINING OF  
EARLY DETECTION  
OF BREAST CANCER  
PROJECT,



BLOOD BANK CENTER  
PROJECT



RENEWING OLD TECH.  
WITH HIGH TECH. & TRAINING AT  
LOCAL UNIVERSITY  
HOSPITAL ICU PROJECT



METABOLISTIC ILLNESSES  
DETECTION PROJECT



UNPRIVILEGED, UNDERSERVED, NO INSURANCE,  
LOW INCOME,, HIGH RATE OF ILLETERACY,



**THETIS – CLEAN HANDS,  
SAFE DRINKING WATER,  
HYGIENE TRAINING OF TRAINEES**



Club's 6 years running project implemented at 12 schools  
Twice Global grant supported  
Served to above 10 000 students



**Rotary.org: News - Global grant provides clean water for Turkish schools, builds Rotary awareness**

Turkish Rotarians have provided 2,500 students in four schools in Adana, Turkey, with new toilets and clean water facilities through a water and sanitation project supported by a Rotary Foundation and make a larger and more lasting impact by involving the community, having a measurable outcome, and building in sustainability.

The project, sponsored by the Rotary club of Adana-Cukurova, Turkey, will be implementing the project during 2013 2014

The Turkish club will be sponsoring concerts by a chorus of Rotarians and Rotaractors in Istanbul and Adana, and arrange newspaper and television coverage, help raise funds .and publicize Rotary's role.

Adana Cukurova submitted two global grant applications, GG Project 25500 and GG Project 25962 with the Frutal club serving as international partner. Both projects were water and sanitation and disease prevention and treatment.





## TRAINING EARLY DETECTION OF BREAST CANCER PROJECT,



8 YEARS RUNNING CLUB PROJECT  
PARTICIPANTS EXCEEDED 6 000  
LADIES SINCE PROJECT BEGAN,

## KEY FINDINGS about the LOCAL COMMUNITY

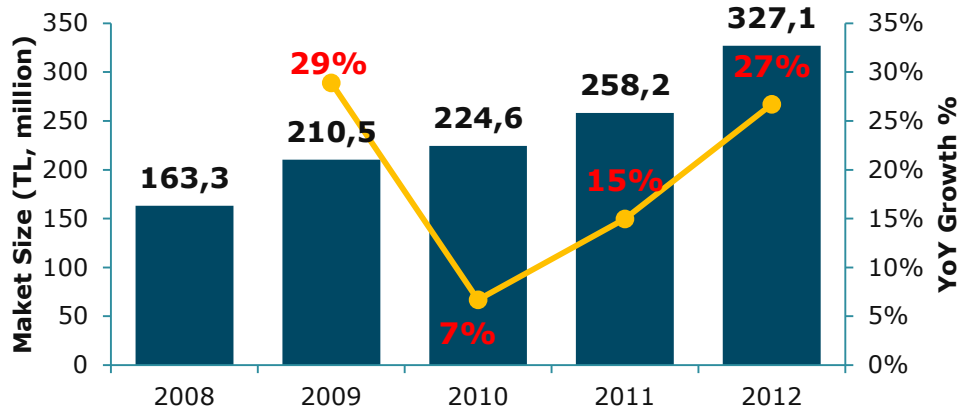
HIGH LEVELS OF POVERTY AND  
LACK INSURANCE., RURAL  
NATURE OF NEWLY  
MOVED, MOST  
CONTRIBUTES TO AN  
INEQUITABLE  
DISTRIBUTION OF BREAST  
HEALTH SERVICES AND  
TRANSPORTATION ISSUES.  
YOUNGER TURKISH  
WOMEN ARE BEING  
DIAGNOSED WITH HIGH  
RATE OF BREAST CANCER  
WITH  
HIGH MORTALITY RATES.



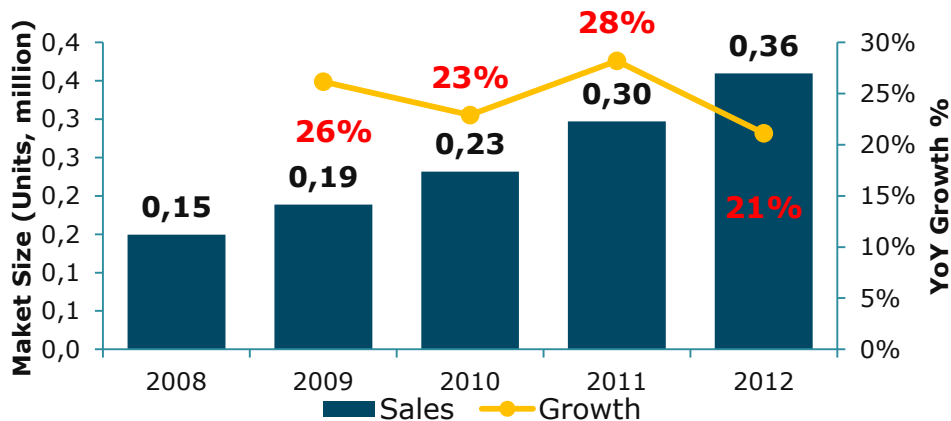
HEALTHCARE AND PHARMACEUTICAL INDUSTRY OVERVIEW

ONCOLOGICS IN GENERAL AND BREAST CANCER IN SPECIFIC ARE GROWING IN TURKEY IN TERMS OF DRUG SALES

ANTINEOPLASTIC MABS (L1X3) Market Sales and Growth (Value)



ANTINEOPLASTIC MABS (L1X3) Market Sales and Growth (Units)



**MOST IMPORTANT PART OF TREATMENT OF ONCOLOGY, EARLY DIAGNOSIS HAS BEEN A PROBLEM FOR TURKISH STATE HOSPITALS AND HEALTHCARE PROFESSIONALS DUE TO LACK OF ADEQUATE EQUIPMENT**

• SOURCE: IMS RETAIL AND HOSPITAL DATABASE, JANUARY 2013

SOURCE: IMS RETAIL AND HOSPITAL DATABASE, JANUARY 2013



**BLOOD BANK CENTER MOBILISING  
TO REACH RURAL AREAS FOR NEW  
DONORS & DONATIONS  
PROJECT**



**MOBILITY WILL ABLE THE BLOOD BANK CENTER TEAM TO REACH TO  
15 MILLION PEOPLE WITH TECHNICIANS OF UNIVERSITY HOSPITAL.**



**UNIVERSITY HOSPITAL, COLLECTS AN AVERAGE OF 30 000 UNITS  
OF BLOOD YEARLY. THIS AMOUNT MEETS ONLY THE HALF OF THE  
NEEDS.**

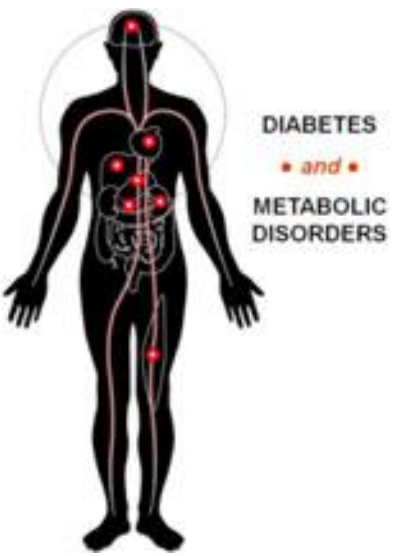


**MOBILISATION OF BLOOD BANK CENTER WILL ABLE THE TECHNICIANS TO  
ENCOURAGE NEW DONORS AND CONTRIBUTE TO BLOOD SHORTAGES IN  
THE UNIVERSITY HOSPITAL**



**METABOLISTIC ILLNESSES  
DETECTION PROJECT  
NEWBORN SCREENING**

NEWBORN SCREENING PROGRAM BY BLOOD SAMPLE ANALYSES BY THIS TANDEM MS WILL ABLE THE UNIVERSITY HOSPITAL TO IMPLEMENT THE PROGRAM FIRST TIME EVER IN TURKEY



DIABETES  
• and •  
METABOLIC  
DISORDERS



**EAT RIGHT  
for Your  
Metabolism**

Metabolic syndrome (Syndrome X)

- Central obesity
- High blood pressure
- High triglycerides
- Low HDL-cholesterol
- Insulin resistance



**Newborn screening** Clinic lacks this new technology equipment ,Tandem MS to screen infants after birth. Top technology ICP that measures enzyme activities instantly and up to 48 results,analysing newborn blood sample the Tandem MS is an efficient,giving results very fast easy to operate equipment. Detection in early stages before the damage illnesses can be efficiently cured by specific nutrition diets.







- 5 Mobile Ventilator,
- 2 Recording type, Defibrillator Monitor, Biphasic,
- 3 Hyper/Hypothermy – Blanket roll
- 2 Non invasive pressure supporting Ventilator (Blood)
- 7 Fibre optik - Laringscope Pediatric patients,
- 7 Fibre optik - Laringscope Adult patients,
- 7 Newborn Care Incubator,
- 37 Perfusors,
- 2 High frequency, vibrating,
- 3 HFOV ventilators,
- 1 Digital infant weigher,
- 3 Blood and liquid warming device,
- 37 Ventilators,
- 21 Monitors of ICU type,

## RENEWING ICU EQUIPMENTS WITH HIGH TECH. EQUIPMENTS and TRAINING PROJECT



THE UNIVERSITY HOSPITAL INTENSIVE CARE UNIT IS THE COMMUNAL INTENSIVE CARE UNIT OF ALL REGIONAL HOSPITALS. BUT, BUILT IN THE 1980'S TO SERVE WITH THE 1980'S TECHNOLOGY TODAY'S ENQUIRIES OF OTHER HOSPITALS PATIENTS ARE BEING TURNED DOWN. INTENSIVE CARE UNIT IS EQUIPPED WITH VERY EXPENSIVE, AND COMPLICATED EQUIPMENTS AND UP DATED HIGH TECHNOLOGY IS NEEDED, WITH FREQUENT TRAINING OF THE MEDICAL STAFF IS ALSO A MUST.

OUR PROJECT IS TO IMPROVE HEALTHCARE QUALITY BY REPLACING THE LIST OF THE ITEMS IN PARTIAL PROJECTS EVERY YEAR AND CONTINUE TILL ALL OLD TECHNOLOGY EQUIPMENTS REPLACED BY THE NEW TECHNOLOGY EQUIPMENTS. AND ASSURE BEST TRAINING IS GIVEN. WITH GIVEN HELP.

*Thank you , Gracias , Merci , Teşekkürler*

