



African Project Exploratory Trip - Update

Gerald Robinson & Will Carlton



Exploratory Trip Overview

Purpose:

Investigate the possibility finding a project where our club and others in our district can partner with another Rotary Club in Africa through the district and global matching grant process.

Partner Club:

- Wobulenzi Club

Location:

- Kapeeka, Uganda (Makumbi Johnson's church)



Uganda Facts

Population:	33.6 million
Life Expectancy:	53.4 years
Official Language:	English
Religion:	Catholic: 42%, Protestant: 42%, Muslim: 12%
Per Capita Income	\$528 per year
38% of the population live on less than \$1.25/day	
People living with AIDS:	1.5 million
AIDS orphans:	1 million (2012)

Wobulenzi Rotary Club





Uganda Project Overview

Current projects underway:

- Water Well Projects
- Medical Clinics
- Dental Clinics
- Children's Program
- Mosquito Net Distribution

New School and Orphanage Campus

Community Water Source



New Community Well



Medical Clinics



Over 3,000 people seen and/or treated

Dental Clinics



Children's Program



Mosquito Net Distribution



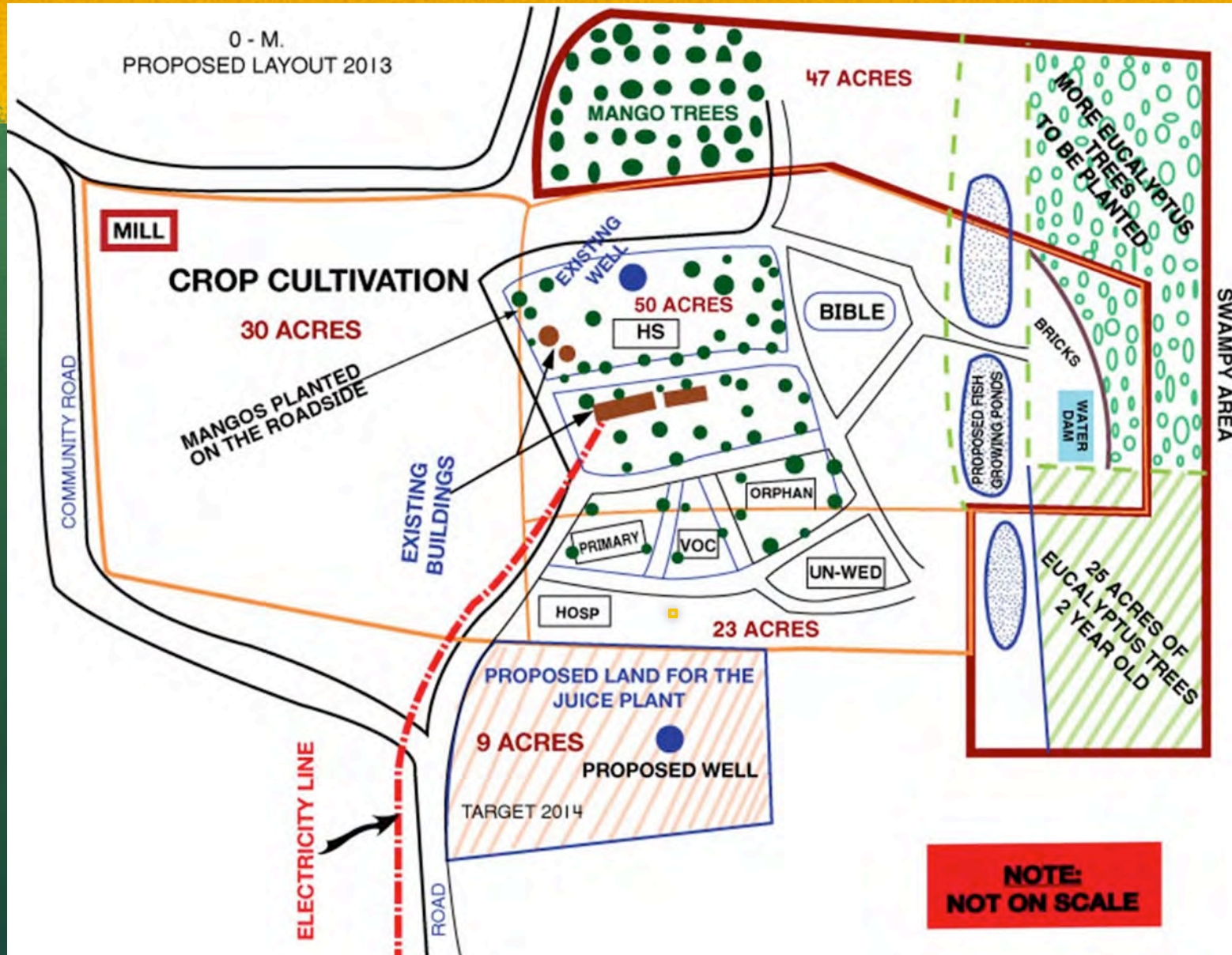
1,600 Mosquito Nets Distributed

Campus Project Overview



- 200 acre campus
- Primary school – 1,400 kids
- Orphanage – 250 kids
- Home for unwed mothers
- Crop cultivation (mangoes, corn, eucalyptus)
- Fish production
- Juice Factory
- More...

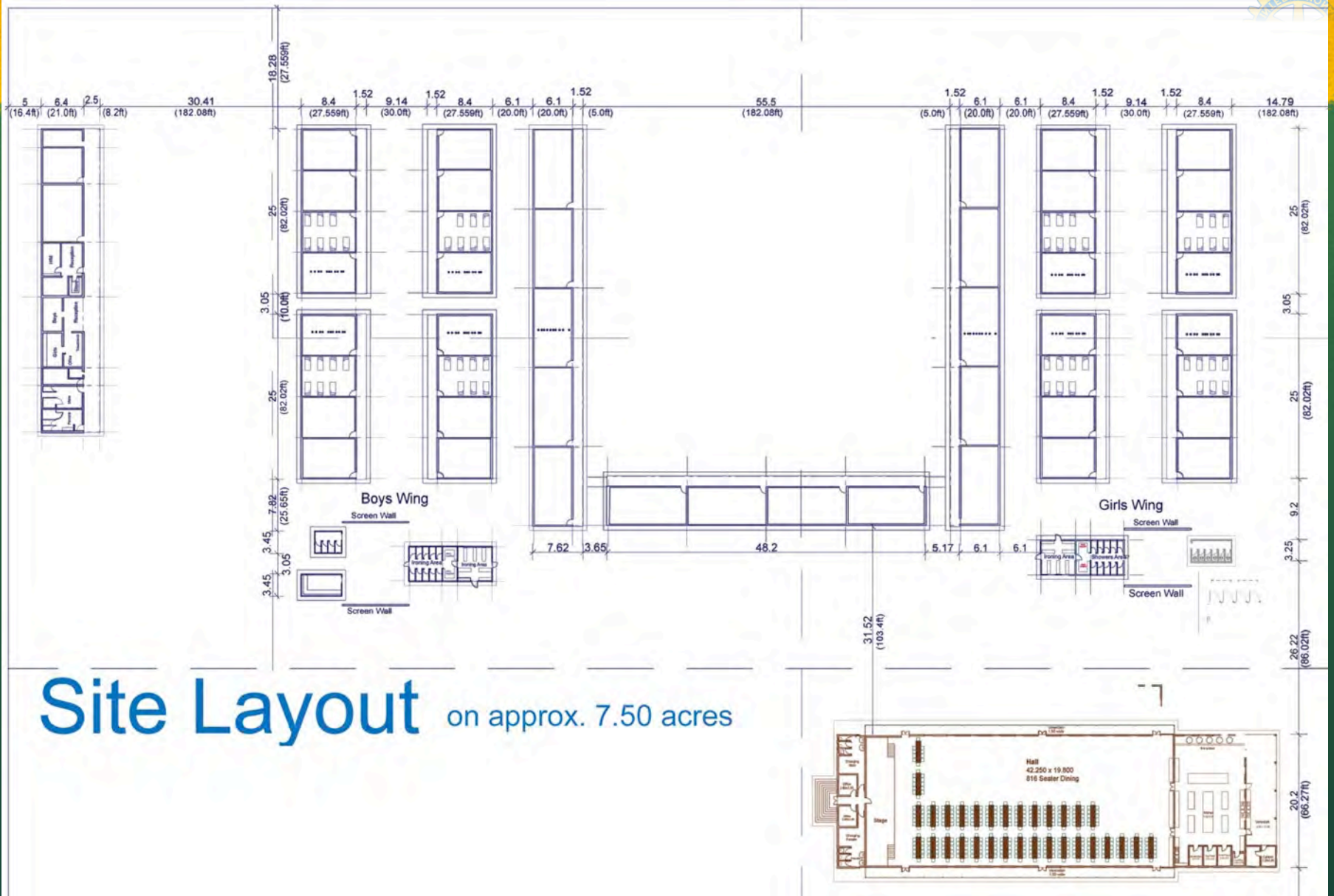
200 ac. Project Master Plan



Current Classroom

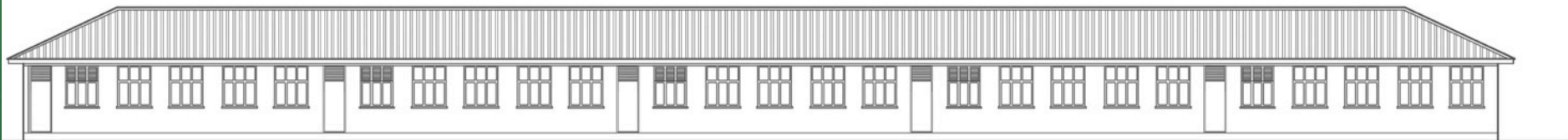


New School Site Plan

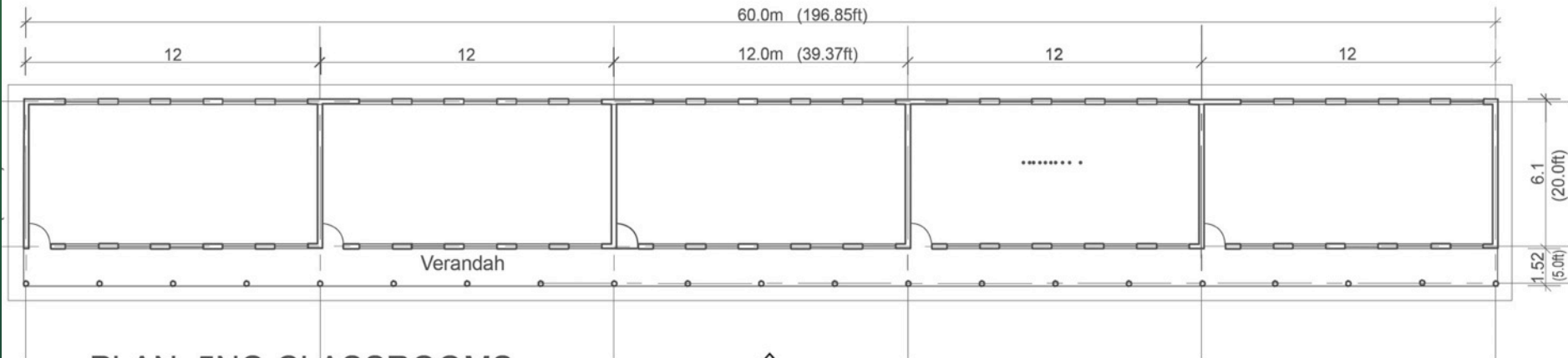


Site Layout on approx. 7.50 acres

New School - Elevation



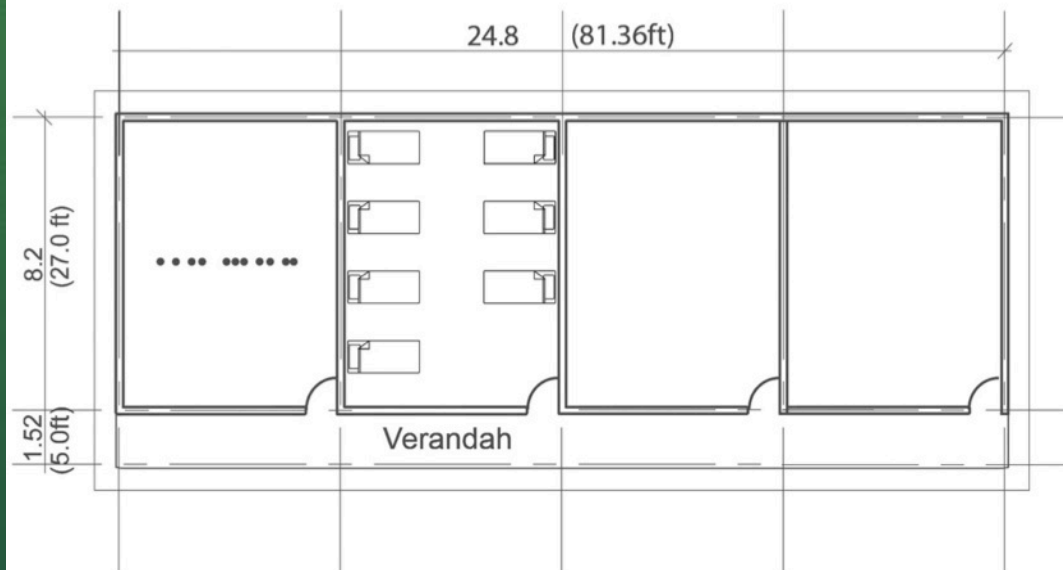
ELEVATION 02



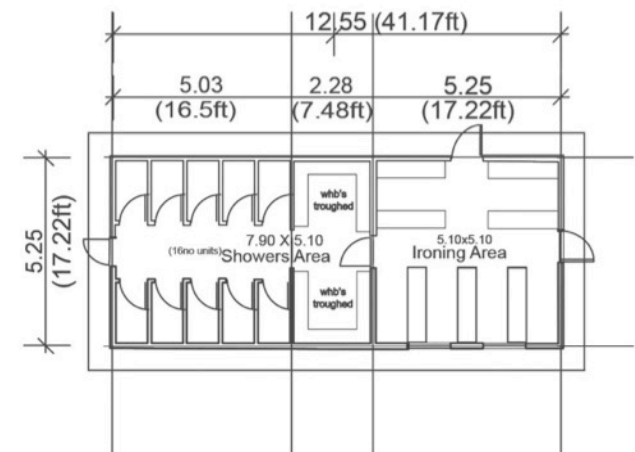
PLAN: 5NO CLASSROOMS



Dormitory Block



PLAN: TYPICAL DORMITORY BLOCK



SHOWER AND IRONING

7 Beds per Room, 28 beds per Block
4 blocks for Boys, 4 blocks for Girls = 228 beds

Dormitory Construction



New Primary School Under Construction



New Primary School Under Construction

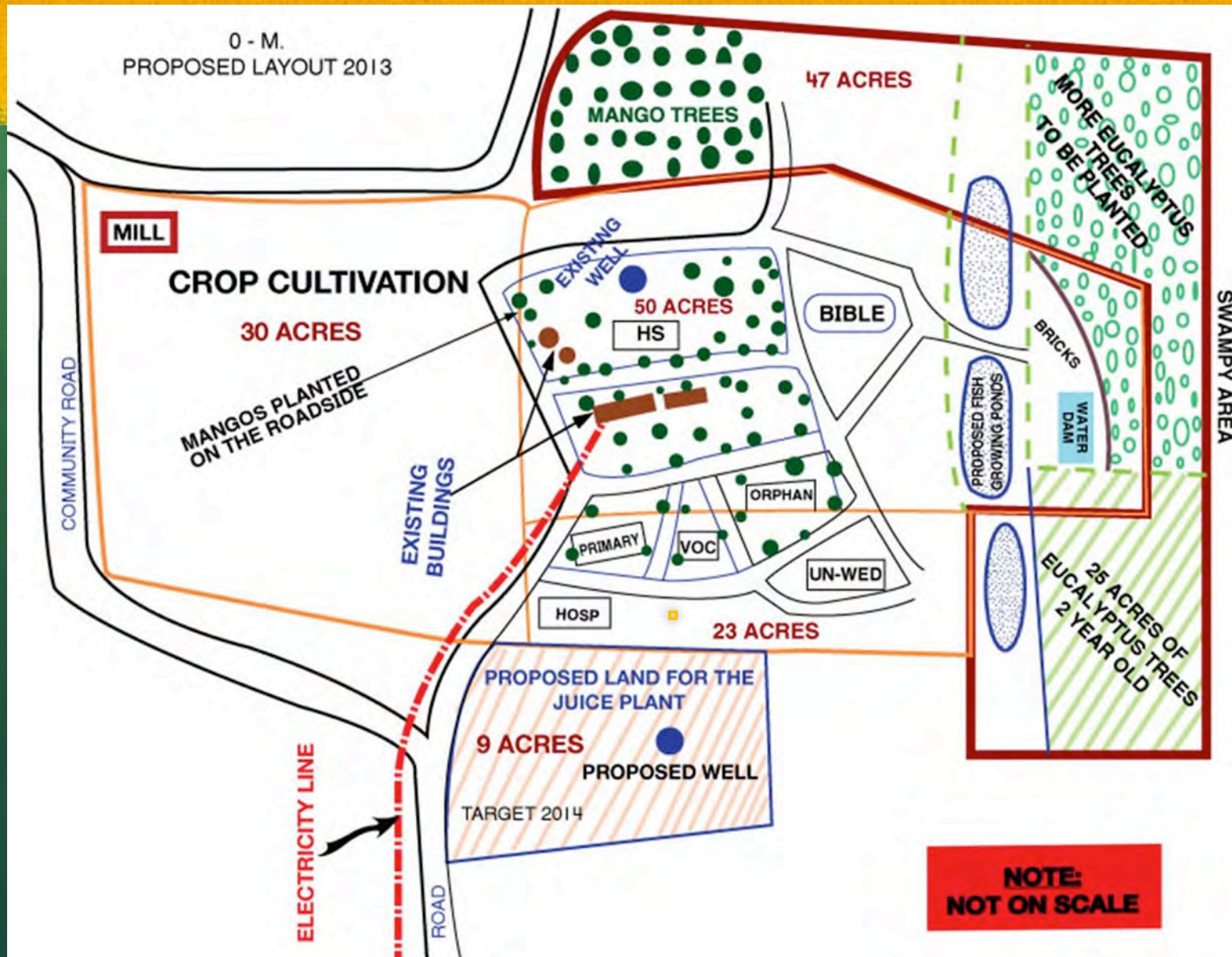




Sustainability

- Long term goal to be **self funding** for all operations
- Funds for current projects are raised through the **Chicken Program**
 - 10,000 chickens for eggs
 - 5,000 chickens for meat
- **Raising Fish** for sale at local markets and restaurants
- **Crop Cultivation** (corn, potatoes, and other vegetables)
 - Planting 30,000 **eucalyptus seedlings** for lumber
- Future Plans include construction of a **Juice Plant** to extract juice from mangos and other fruit for packaging and sale
 - Planted 10,000 **mango seedlings** for fruit

Project Master Plan



Sustainability: Fish Ponds Under Construction





Sustainability – Chicken Project

Currently funding School fees for Children's Program





Sustainability – Crop Cultivation





Uganda Projected Costs

Facility/Project	Estimated Cost (USD)
Orphanage: 250 orphans	\$125,000
Teenage Mother's Center: 600 mothers	\$270,000
Vocational Training School: 500 students	\$390,000
Primary School: 1,400 students	\$360,000
High School: students 1,400	\$430,000
Clinic to handle 150-200 people per day	\$250,000
Farming equipment	\$75,000
Juice Factory	\$250,000
TOTAL	\$2.2M

Farm Tractor



The tractor will be used for a number of things:

- ◆ Farming operations
- ◆ Construction of school and orphanage
- ◆ Timber operation (Eucalyptus trees)