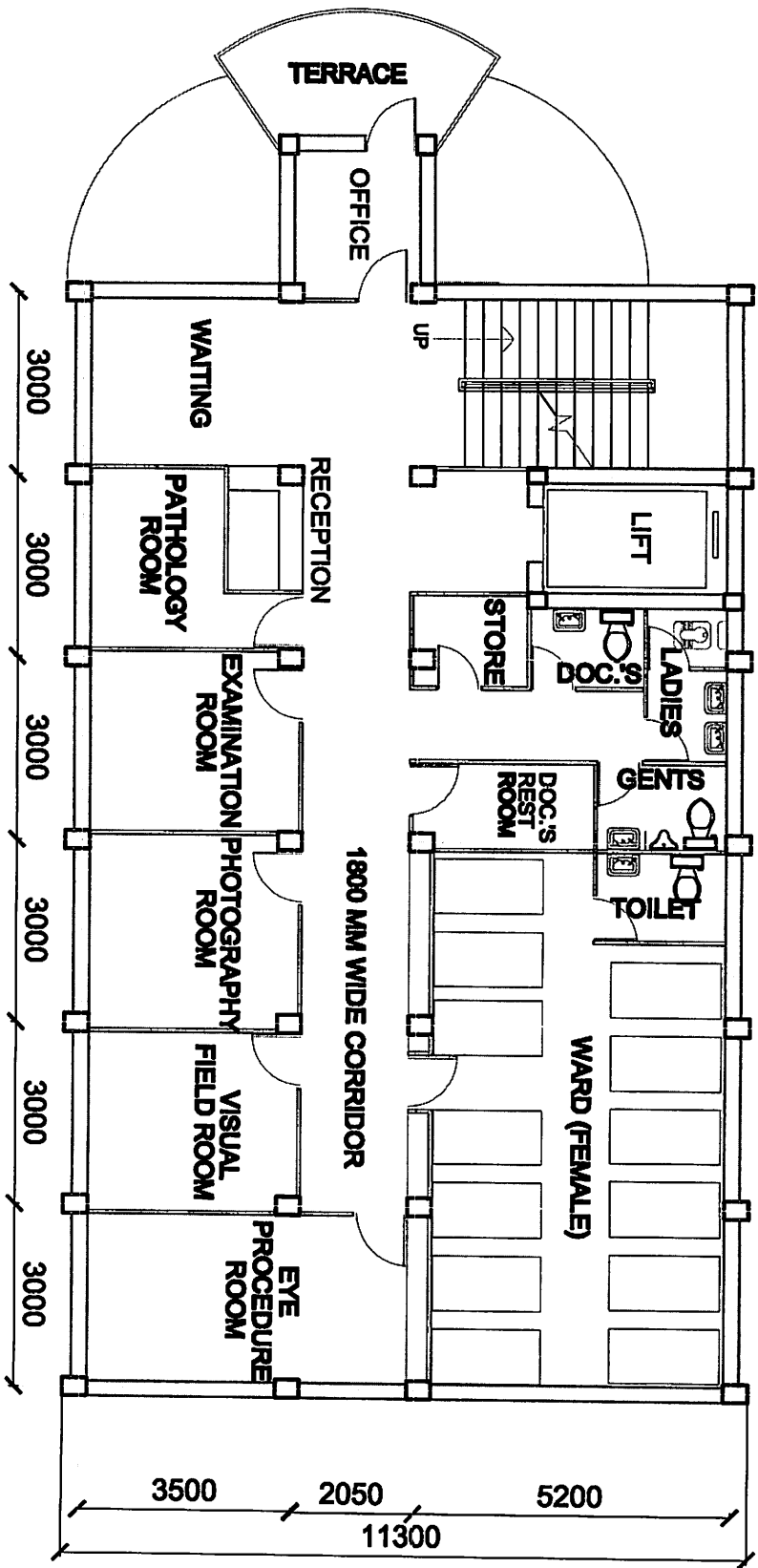


GROUND FLOOR PLAN  
AREA = 222.4 SQ.M

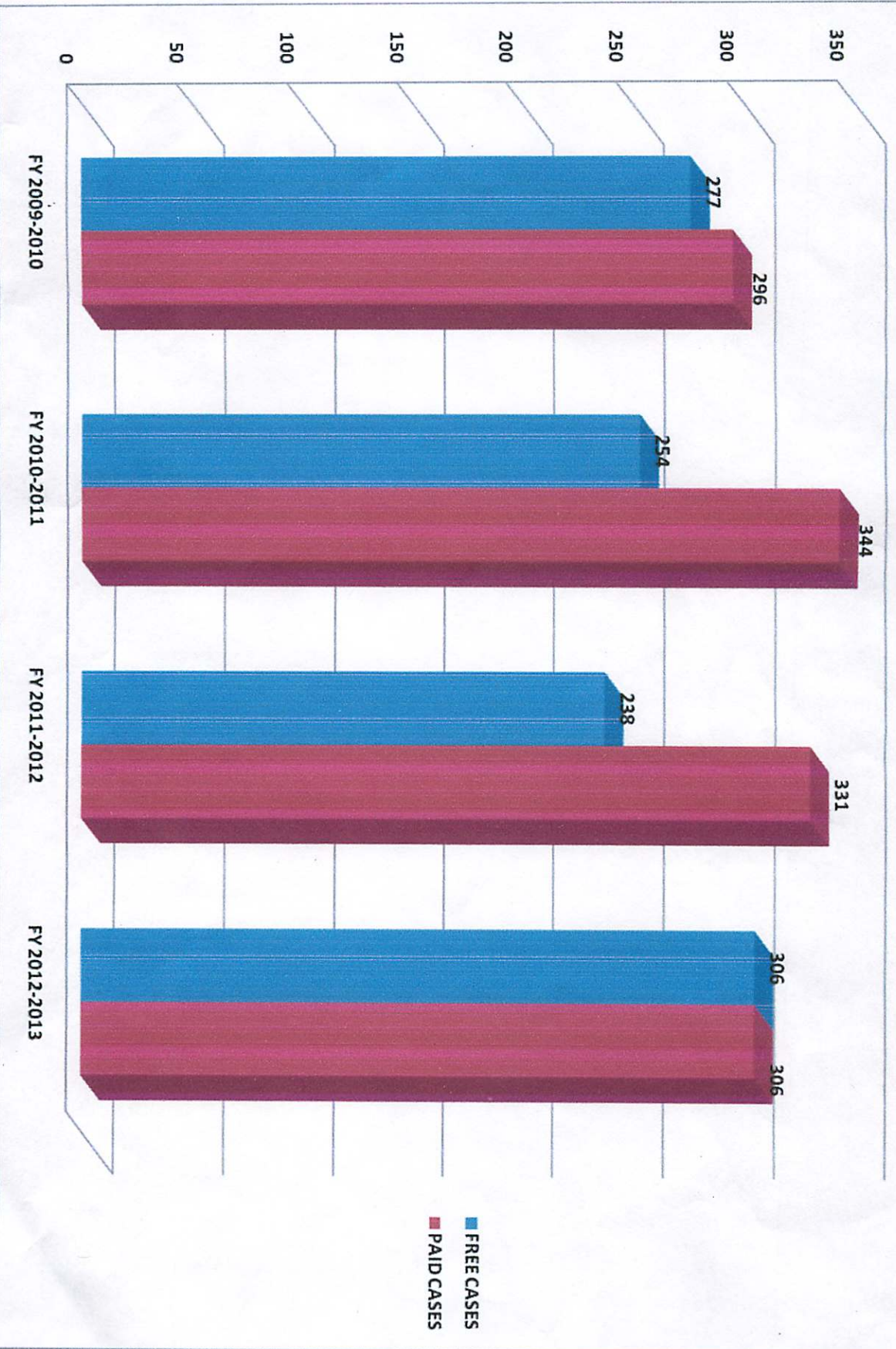
PROPOSED EYE HOSPITAL



**FIRST FLOOR PLAN**  
**AREA = 208.0 SQ.M**

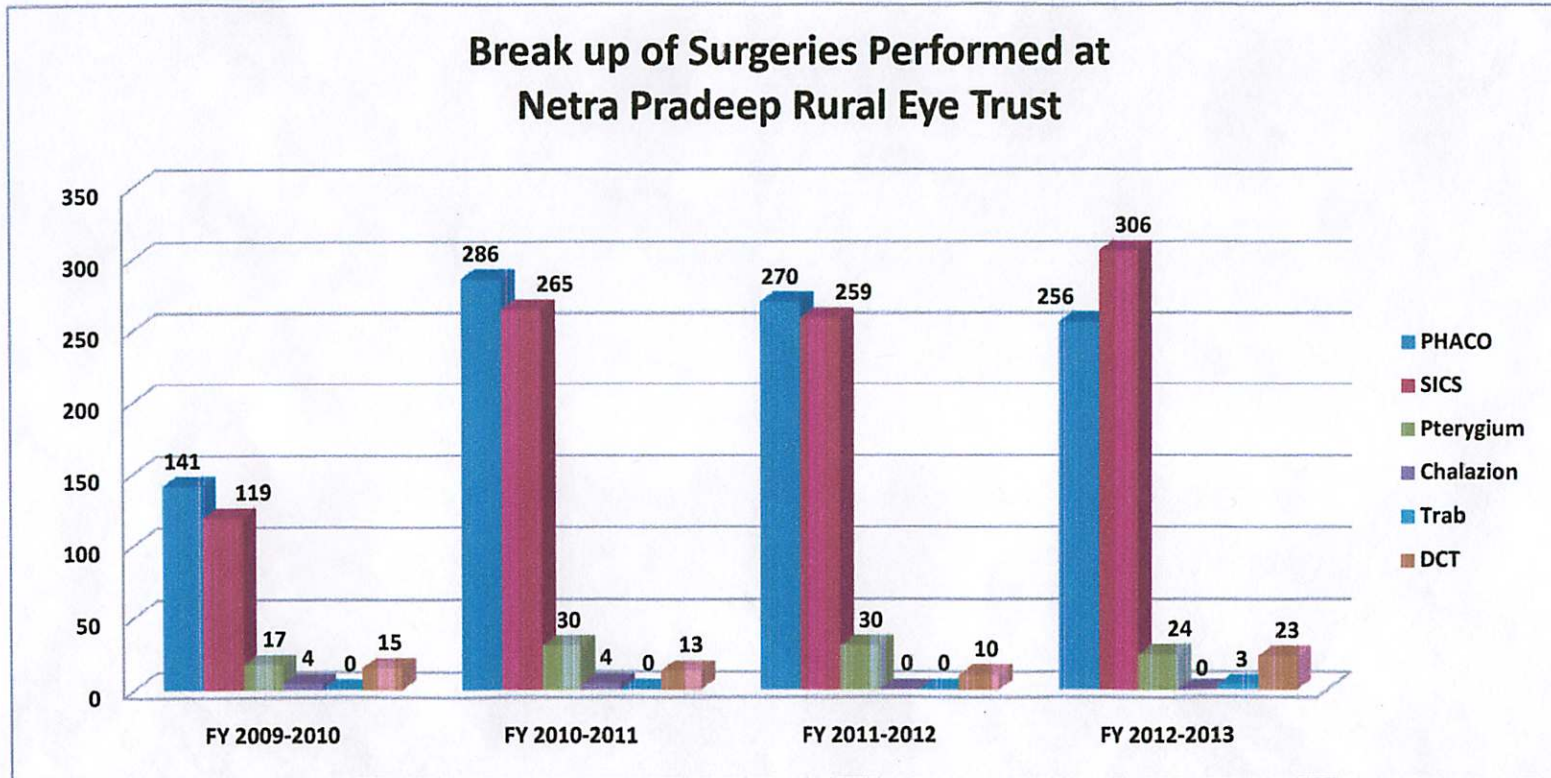
**PROPOSED EYE HOSPITAL**

Number of Surgeries at Netra Pradeep Rural Eye Trust



OT STATS

	Phaco	SICS	Pterygium	Chalazion	Trab	DCT
FY 2009-2010	141	119	17	4	0	15
FY 2010-2011	286	265	30	4	0	13
FY 2011-2012	270	259	30	0	0	10
FY 2012-2013	256	306	24	0	3	23



### Number of OPD patients at Netra Pradeep Rural Eye Trust

