

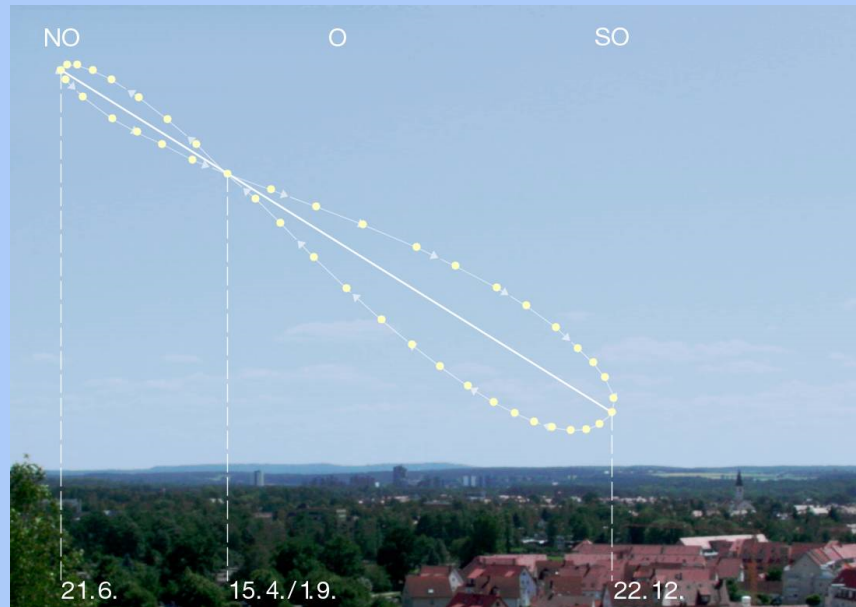
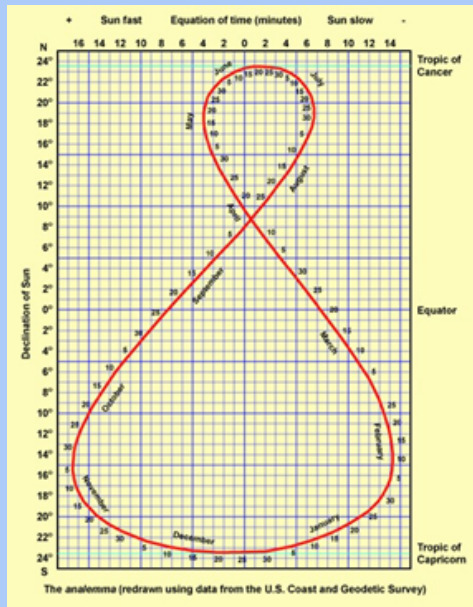
**MISSOULA ROTARY
CENTENNIAL PARK
ROTARY CENTENNIAL /
FOUR-WAY TEST
MONUMENT PROJECT**



WHAT IS THE FOUR-WAY TEST ?

- A moral code for community leadership
- Helps guide what to think, say or do in a challenging situation.
- Effective leadership meets all four parts:
 1. Is it the truth?
 2. Is it fair to all concerned?
 3. Will it build goodwill or better friendships?
 4. Will it be beneficial to all concerned?
- A core element in the teachings of Rotary International.
- A timeless principle we've been looking to memorialize as part of something of lasting value to our community.

WHAT IS AN ANALEMMA ?



An analemma is a fancy name for a solar calendar.

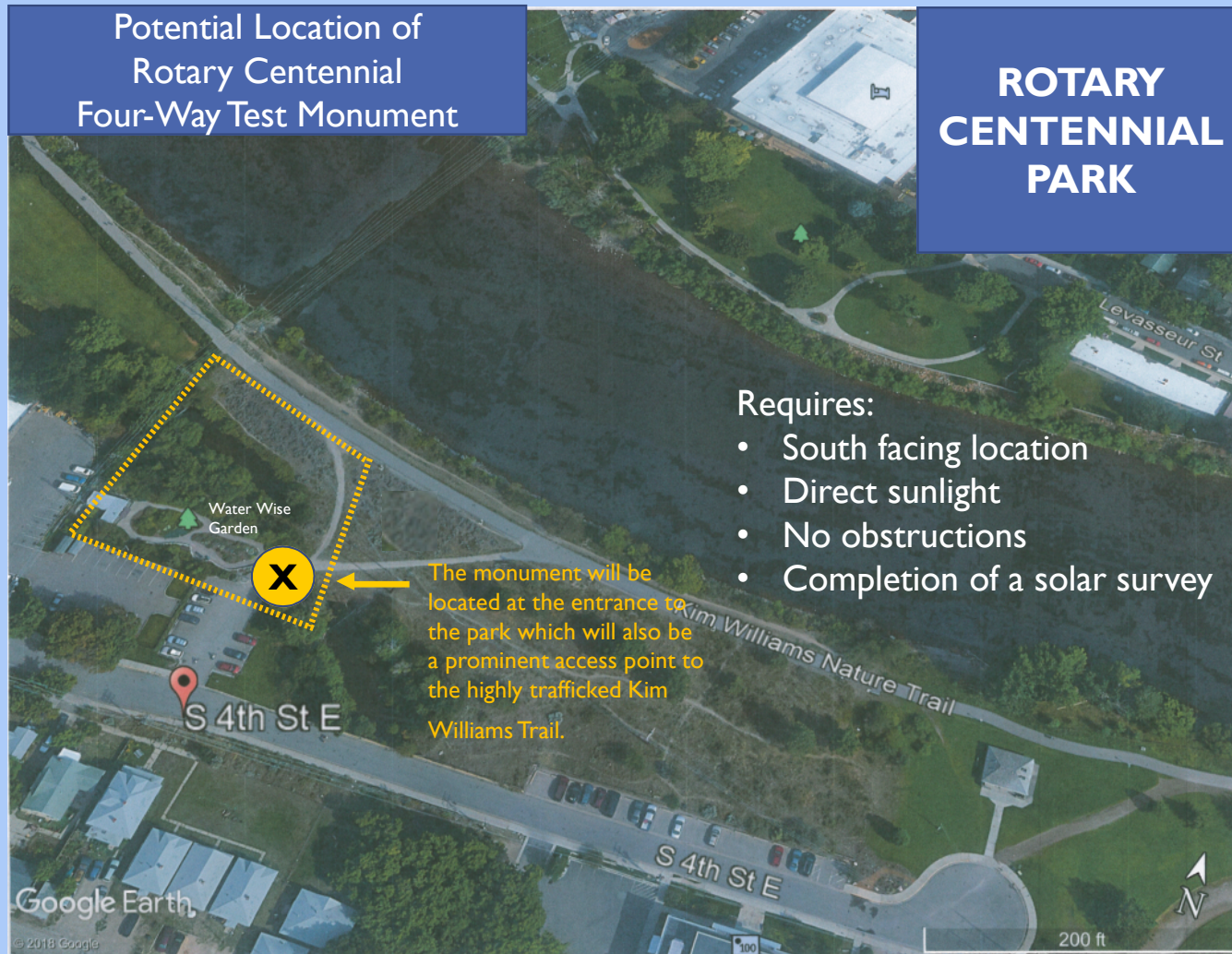
It is a diagram that shows the position of the sun on any day of the year for a specific location.

When integrated into a monument, either a spot of light or a shadow allows an observer to know the day of the year based on the position of the sun at noon.

COMMUNITY BENEFITS

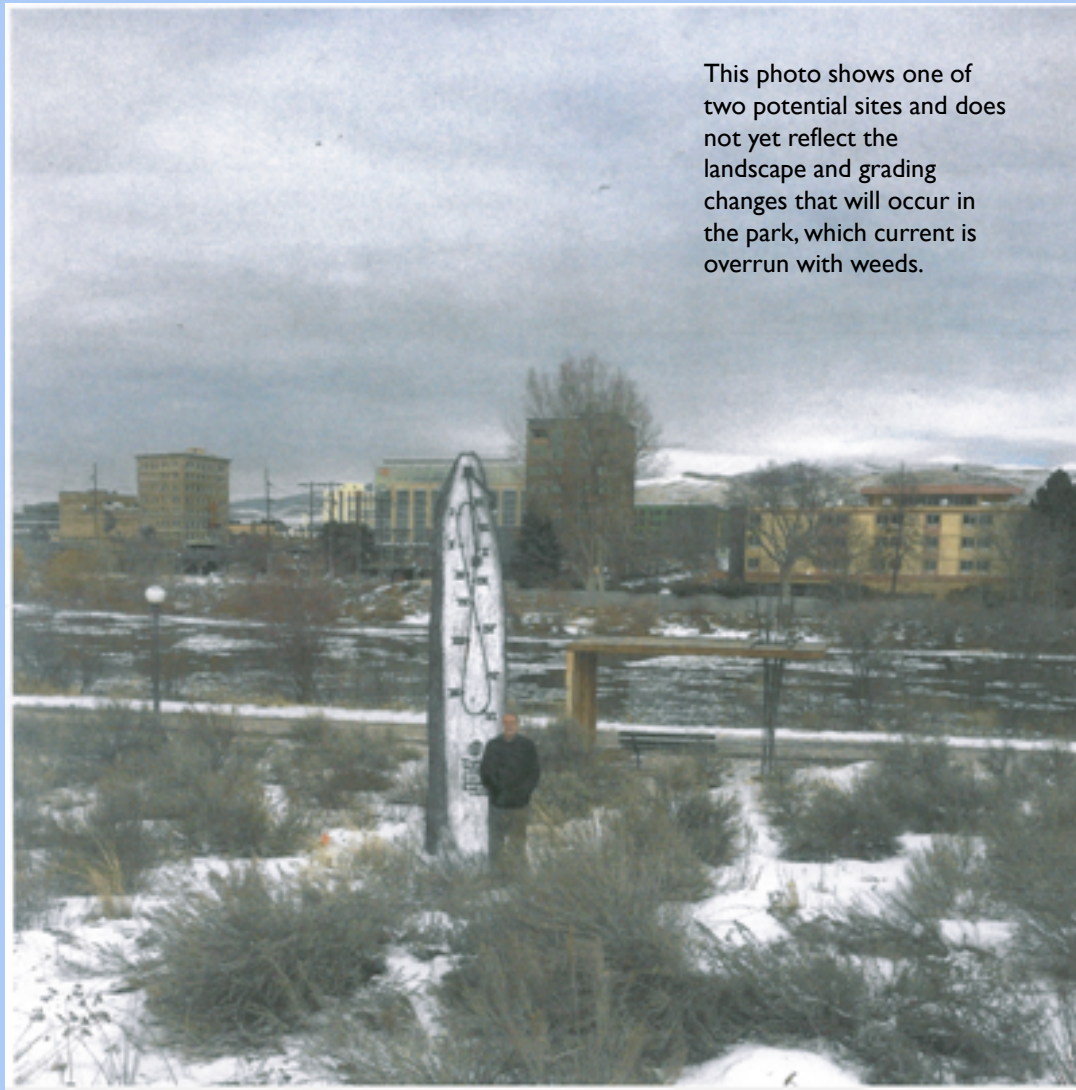
- An educational tool to promote understanding and appreciation of astrology, the seasons and nature.
 - ↳ A great accompaniment to the Water Wise Garden, particularly for schools field trips and science and nature programs.
- A fitting tribute to 100 years of Rotary and the Four Way Test.
- For a dedicated few, it will be a destination attraction.
- For most, it will be a unique point of interest that will enhance the experience of our parks and they will want to share with others.

PLACEMENT



General boundary of new Rotary Centennial Park, which will include the current Water Wise garden and expand down slope to the Kim Williams Trail.

DESIGN

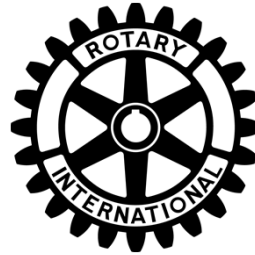


This photo shows one of two potential sites and does not yet reflect the landscape and grading changes that will occur in the park, which current is overrun with weeds.

- 20' tall
- 4' wide by 2' deep
- Natural basalt column quarried in Idaho
- Analemma and inscription etched into surface
- Iron rod installed to mark day of year on Analemma
- Engraving of Rotary Four Way Test
- Rotary International Logo

Design by Lawrence K. Brehm, AIA, Architect

Celebrating 100 Years of Rotary in Missoula 1917-2017



And our commitment to the
Four-Way Test
of the
Things We Say, Think or Do:

1. Is it the truth?
2. Is it fair to all concerned?
3. Will it build goodwill or better friendships?
4. Will it be beneficial to all concerned?

PLAN

Validate Monument & Park Design

- Raise initial funds
- Agree upon specific site
- Complete solar survey
- Get approval for park placement
- Create analemma/map
- Finalize budget and schedule
- Validate monument design and materials
- Seek District matching grant for stone
- Order monument stone (this could take 6-12 months to quarry, cut and receive)
- Finalize overall park design

Fundraise and Complete Monument

- Raise final funds and donations
- Plan / engineer site
- Schedule work
- Secure permits
- Receive monument stone
- Finalize etching
- Apply anti graffiti sealant
- Etch stone
- Store stone until completion of park

Finish Park and Install Monument

- Prepare monument site
- Pour footings
- Crane monument into site
- Finish monument installation
- Finish paths, sidewalks and nearby landscaping
- Opening celebration and dedication

Year One (Feb 2018 – Feb 2019)

Year Two (Feb – Dec 2019)

Steps in red are complete

PRELIMINARY BUDGET

EXPENSES	<u>Paid from Grant</u>	<u>From Club Funds</u>	<u>In Kind</u>	
Architectual Design			750	
Solar Survey			2,000	
Analmma Engineering			3,000	
Final Modeling and Testing			500	
Monument Materials	2,500	9,500		
Engraving		3,000	1,000	
Storage			1,000	
Crane Rental			1,000	
Concrete Work		2,000		
Landscaping		2,000		
Ligthing and Electrical		2,000		
Anti-Graffetti Selaing		2,000		
Contigency		4,000		
Total	\$ 2,500	\$ 24,500	\$ 9,250	\$ 36,250
REVENUES				
Committed in-kind donations			5,750	
Matching funds raised		2,500		
District Grant Requests	2,500			
In Kind Asks Undereway			3,000	
Amount to be Fundraised		22,500		
	\$ 2,500	\$ 25,000	\$ 8,750	\$ 36,250