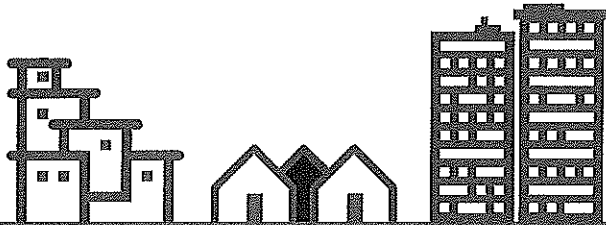


SUSTAINABILITY

For Rotary, sustainability means providing long-term solutions to community problems that community members themselves can support after the grant funding ends.



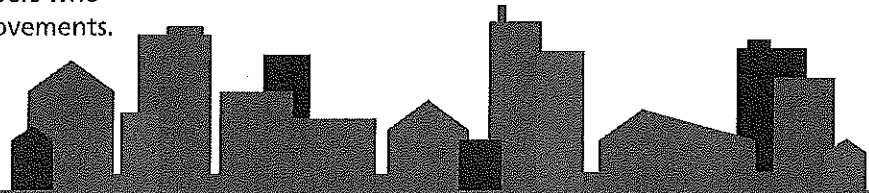
Start with the community

Identify a need and develop a solution that builds on community strengths and aligns with local values and culture.



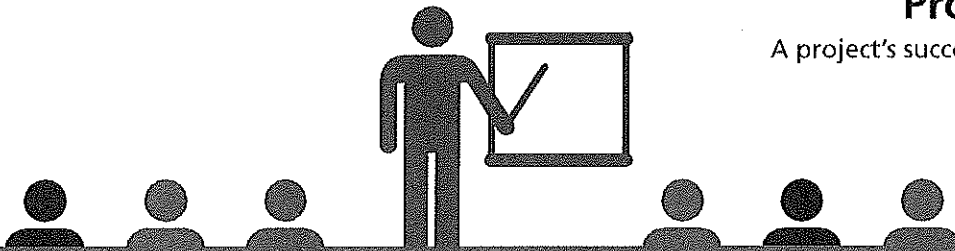
Encourage local ownership

Identify key community members who can help pioneer lasting improvements.



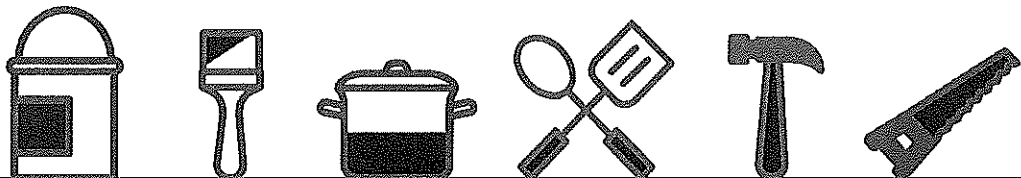
Provide training

A project's success depends on people.



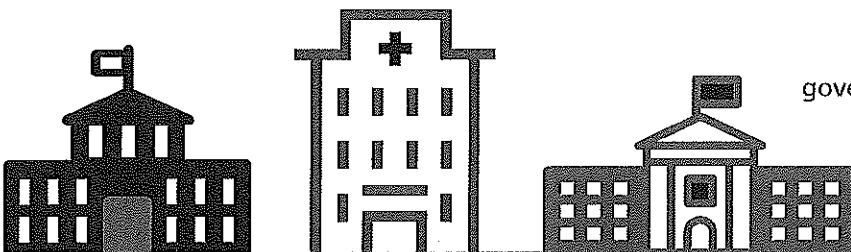
Buy local

Purchase equipment and technology from local sources.



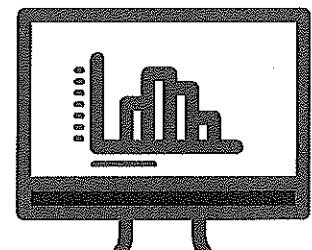
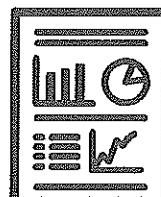
Find local funding

Get local funding through governments, hospitals, companies, and other organizations.



Measure your success

Develop clear and measurable project outcomes and determine how you will collect your data.



Sustainability Score for Global Grant Projects
District 5440

Start with the community

- 0 - No interaction with the community
- 1 - Community is informed of the project
- 3 - Have conducted a community needs assessment
- 5 - Have formed a Rotary Community Corps or similar organization of involved community members.

Enter score (0-5) 5

Encourage local ownership

- 0 - No local ownership of project success after implementation
- 1 - Local community has expressed interest in being involved after project completion
- 3 - After the project is implemented, a local organization will monitor the success of the project.
- 5 - After the project is implemented, a local organization will monitor the success of the project as well as be responsible for maintenance and improvements over the long term

Enter score (0-5) 5

Provide Training

- 0 - No training
- 1 - Some training on maintaining the project
- 3 - People are trained to develop or improve skills
- 5 - People are trained to develop or improve skills, local people are trained to be trainers, and a long term training program will be implemented

Enter score (0-5) 1

Buy Local

- 0 - All materials and technical support is imported with no clear support plan
- 1 - Replacement parts and technical support will be available after the project is completed.
- 3 - Replacement parts and technical support will be provided by in-country sources after the project is completed
- 5 - All key project items are manufactured and assembled in-country and are available locally along with replacement parts and technical support.

Enter score (0-5) 5

Find local funding

- 0 - No local funding
- 1 - A small token investment is made by local sources
- 3 - Some local investment of funds, labor or in-kind contributions will be made
- 5 - A significant local investment of funds, labor or in-kind contributions will be made

Enter score (0-5) 5

Measure your success

0 - No success measures in place

1 - Success measures identified and communicated to project stakeholders

3 - Success measures identified and communicated and data collection methods specified.

5 - Clear project objectives have been identified, methods of data collection specified, and funding and people for data collection are in place

Enter total score (0-30) 30